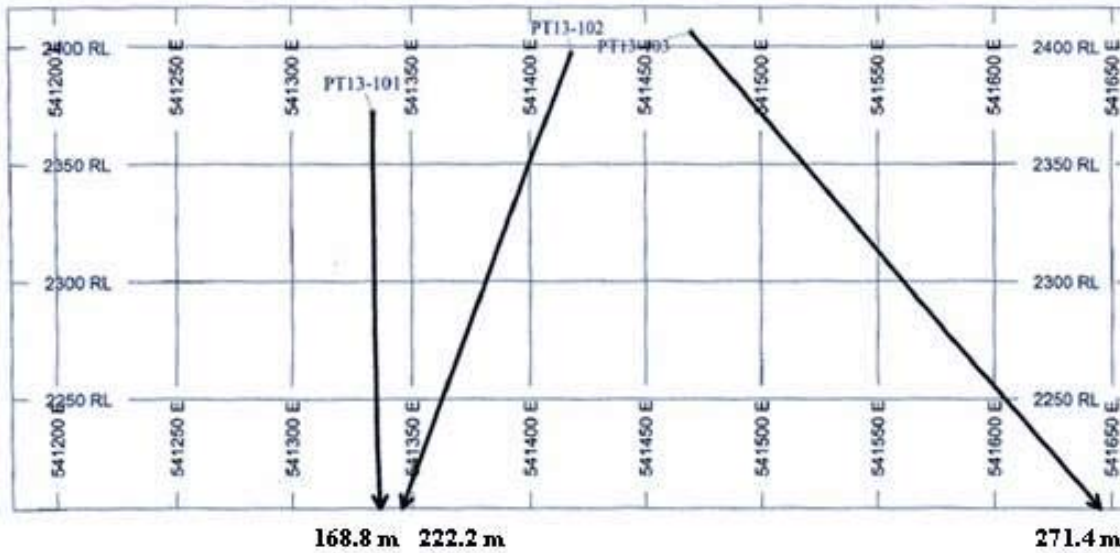


Long Section – Dunwalk Grid

View to North



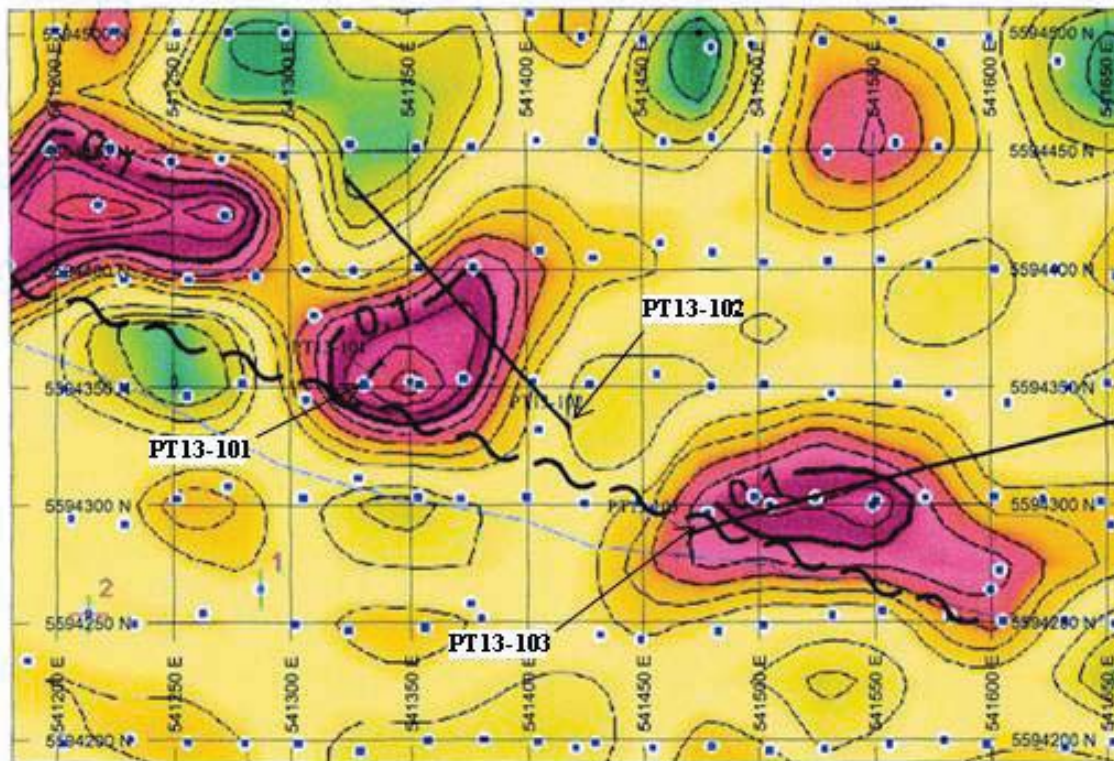
Interpreted Basement Fault



PT13-101 – 212 m depth

PT13-102 – 289 m depth

PT13-103 – 287 m depth

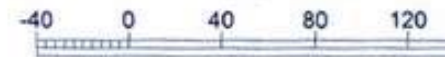


PLAN SPECS:

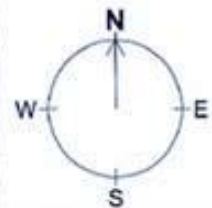
REF. PT. E, N 541400 m 5594000 m
EXTENTS 477.4 m 320.3 m

SCALE 1 : 3500

(m)



*unknown



Silver Mountain Mines Inc.



Ptarmigan
Dunwalk Grid